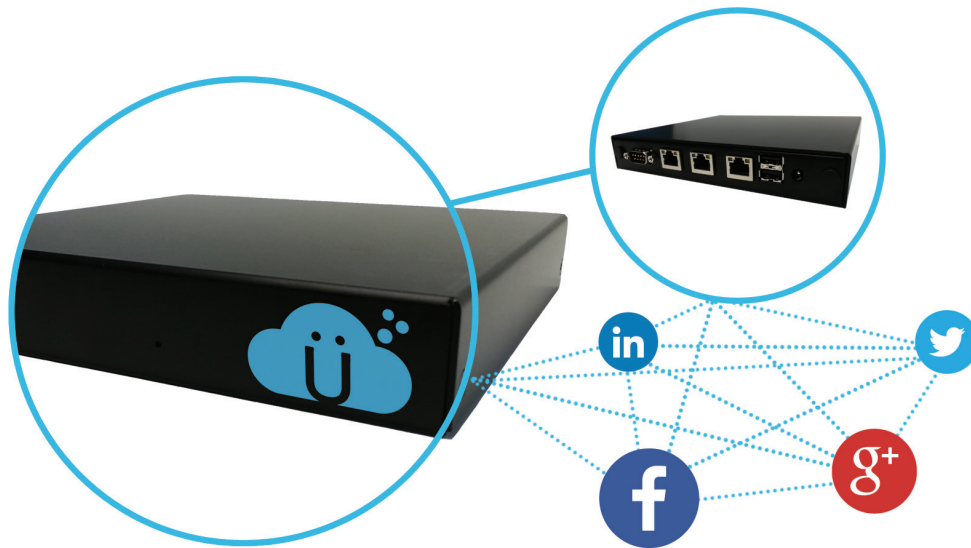


## MANAGE AND MONETIZE YOUR WI-FI NETWORKS EASILY AND ECONOMICALLY.



### APPLICATIONS

- Retail/Chain Stores
- Shopping Malls
- Pavilions / Concert Venues
- Multi-Dwelling Units
- Convention Centers
- Schools/Campus'
- Restaurants

### PRODUCT HIGHLIGHTS

- 100% Scalable Architecture
- Works with any Wi-Fi Radio
- Plug-and-Play Installation
- Remote Network Monitoring
- Lowest Cost of Ownership

### FEATURES & BENEFITS

- Network Monetization Using Built-in Tools
- Easily Build Email Lists from Users Social Media Logins
- Built-in Billing, Reporting and Credit Card Processing
- 100% Compatible with ANY Wi-Fi Radio, Simplifying Network Deployments
- Plug-and-Play Installation that Work with Any ISPs High-Speed Internet
- Centralized Cloud Portal for Managing Multiple Locations
- Securely Segregate Private from Public Network Traffic
- Integrated Security Firewall Providing Intrusion Protection
- Lowest Cost of Ownership by Leveraging Existing or New Wi-Fi Networks
- Ideal for Large and Small Wi-Fi Networks with Varying Wi-Fi Needs

ÜberWi is a cloud-based Wi-Fi management service offering that allows businesses to easily and economically manage and monetize their Wi-Fi networks. With ÜberWi businesses can leverage the power of their Wi-Fi networks by adding custom content and promotions tailored to users.

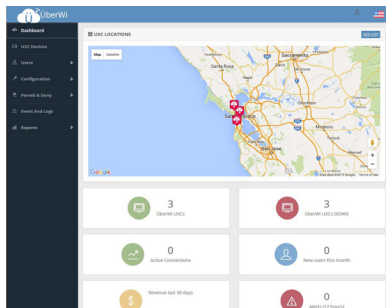
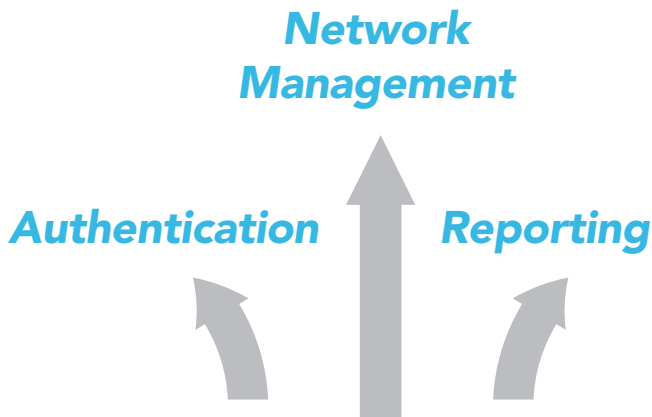
Managed through an intuitive, cloudbased interface, ÜberWi makes managing one or thousands of Wi-Fi networks easy, from anywhere. A truly flexible and scalable solution, ÜberWi can be deployed in new or existing Wi-Fi network deployments, regardless of network design or equipment and provides network owners with both end-to-end visibility and real-time user and network analytics.

**STARTER.** The **Starter** package is designed for small networks with minimal network requirements. Our core plan that offers a custom user-experience for a limited number of users.

**FLEX.** Provides a more comprehensive set of features for a premium user-experience and a robust network management portal. Supporting up to 100 concurrent users and the ability to offer advertising, the **Flex** plan is perfect for medium sized networks.

**PRO.** Built for the most demanding networks, the **Pro** package offers unlimited concurrent users, a fully customizable user-experience and a robust management portal.

**PRO PLUS.** Built for monetizing a wireless network, the **Pro Plus** plan provides a payment portal for processing several methods of payment. Create custom time or bandwidth-based plans to meet every customers needs.



|                            | Starter | Flex    | Pro     | Pro Plus |
|----------------------------|---------|---------|---------|----------|
| <b>UXC PRICING</b>         |         |         |         |          |
| UXC Gateway                | \$299   | \$299   | \$299   | \$299    |
| Monthly Service Fee        | \$0     | \$29.99 | \$49.99 | \$99.99  |
| <b>AUTHENTICATION</b>      |         |         |         |          |
| Concurrent Users           | 30      | 100     | 300*    | 300*     |
| Social Media Login         | X       | X       | X       | X        |
| User Self-Registration     | X       | X       | X       | X        |
| MAC Based Authentication   | X       | X       | X       | X        |
| Bandwidth Throttling       |         | X       | X       | X        |
| <b>USER EXPERIENCE</b>     |         |         |         |          |
| Captive Portal             | X       | X       | X       | X        |
| Custom User Experience     | X       | X       | X       | X        |
| Splash Page                | X       | X       | X       | X        |
| Terms & Conditions         | X       | X       | X       | X        |
| <b>MONETIZATION</b>        |         |         |         |          |
| Ad Injection               |         | X       | X       | X        |
| Prepaid Vouchers           |         | X       | X       | X        |
| Payment Portal             |         |         |         | X        |
| Paypal Processing          |         |         |         | X        |
| Credit Card Processing     |         |         |         | X        |
| <b>NETWORK</b>             |         |         |         |          |
| Plug-and-Play Installation | X       | X       | X       | X        |
| Compatible with Any Radio  | X       | X       | X       | X        |
| Works with any ISP         | X       | X       | X       | X        |
| Cloud-Managed              | X       | X       | X       | X        |
| Integrated Firewall        |         | X       | X       | X        |
| <b>MANAGEMENT</b>          |         |         |         |          |
| Central Dashboard          | X       | X       | X       | X        |
| Network Monitoring         | X       | X       | X       | X        |
| User Monitoring            |         | X       | X       | X        |
| User Management            |         | X       | X       | X        |
| Log Reports                |         | X       | X       | X        |
| Email Alerts               |         | X       | X       | X        |
| Built-in Reporting         |         | X       | X       | X        |
| Log Reports                |         | X       | X       | X        |
| User Metrics               |         | X       | X       | X        |

\*No hard limit, concurrent user count based on available system resources

Contact us to find out more about monetization strategies and how ÜberWi gateways can start generating money and improving your customer experience today.

[www.uberwi.com](http://www.uberwi.com) | Sales & Support - 571-295-7600